

481500

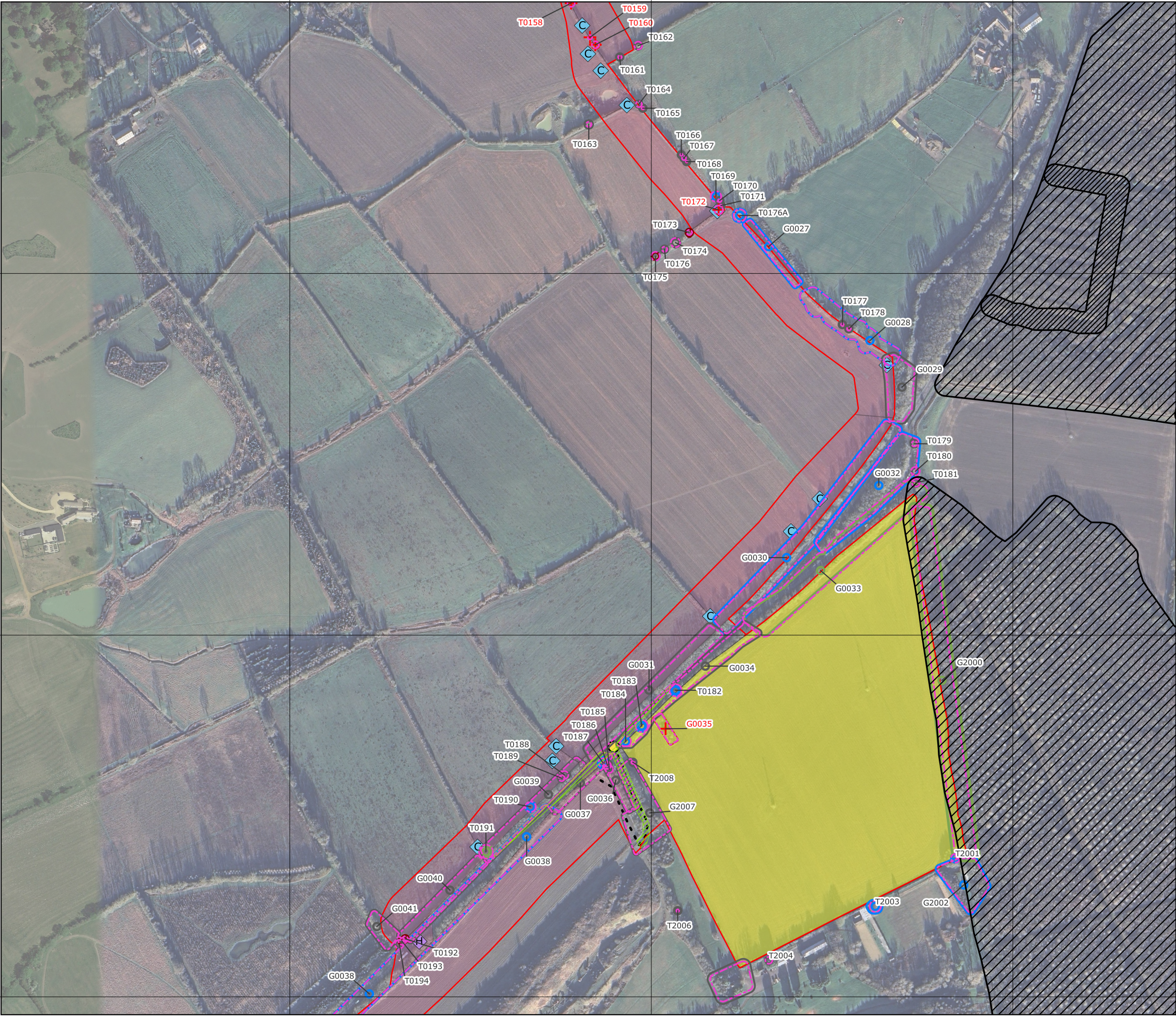
482000

482500

270500

270000

269500

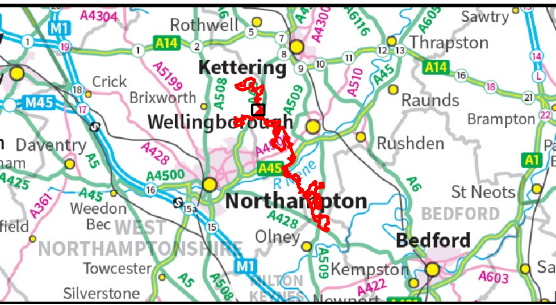


Title: Figure 19.2.6 Tree Impact Plan
Cable Route Corridor Sheet 2

Document:
Arboricultural Impact Assessment and Outline
Arboricultural Method Statement

- Legend:
- Order Limits
 - Veteran Tree/Ancient Woodland Buffer Zone
 - Root Protection Area
 - Tree Stem Position**
 - Category A Tree (High Quality)
 - Category B Tree (Moderate Quality)
 - Category C Tree (Low Quality)
 - Category U Tree (Very Low Quality)
 - Possible Tree Removal
 - Tree Canopy Spread**
 - Category A Tree (High Quality)
 - Category B Tree (Moderate Quality)
 - Category C Tree (Low Quality)
 - Category U Tree (Very Low Quality)
 - Possible Tree Removal
 - Possible Canopy Impacts
 - Access Point (Cable Corridor)
 - Indicative Access Route (Cable Corridor)
 - Crossing Point**
 - HDD
 - Open Cut
 - Construction Compound
 - Cable Corridor

Please note that trees within the Sites have been plotted on a topographical survey. The positions of trees within the Cable Route Corridor have been estimated based on aerial imagery.
Data: Natural England, 2025; Lanpro, 2025; IGP, 2025
Base Maps: © Crown copyright and database rights 2023 Ordnance Survey 0100031673



APFP Regulation: 5(2)(a)
Application Doc no.: EN010170/APP/GH6.4.19.2.6
Drawing no.: P3535_LPR_ZZ_XX_DR_Z_ARB_0324

